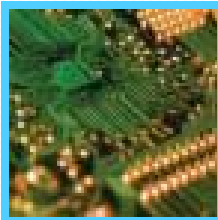
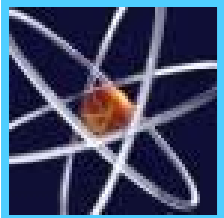


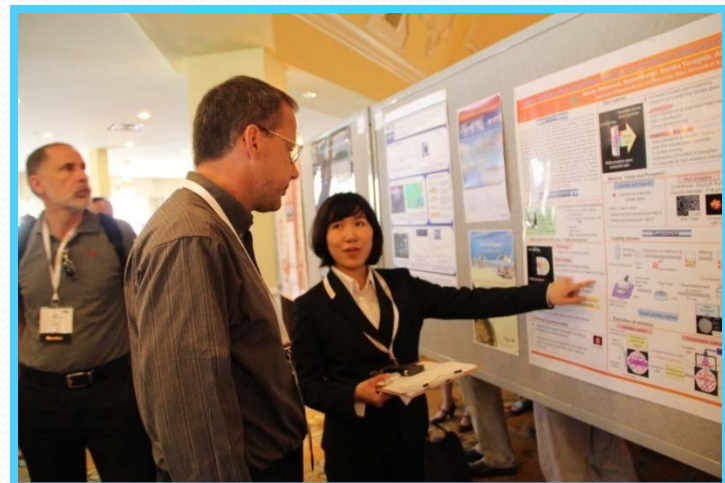
The American Ceramic Society

ACerS Activities Getting Involved



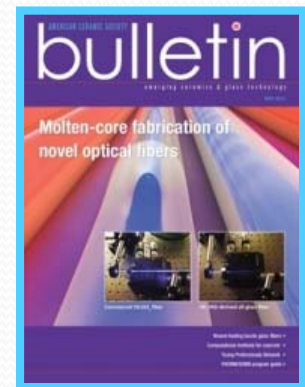
ACerS Meetings – Present, Participate, Organize

- MS&T – ACerS Annual Meeting
 - Basic Science, Engineering Ceramics, Electronics, GOMD, Nuclear & Environmental, AACS & More
- Art, Archaeology, and Conservation Science Division Workshop
- Electronic Materials and Applications
- International Conference on Advanced Ceramics and Composites
- GOMD Annual Meeting
- Cements Division Annual Meeting
- Refractory Ceramics Division AM
- Structural Clay Division AM



ACerS Publications – Write, Review, Edit

- Journal of the American Ceramic Society
- International Journal of Applied Ceramic Technology
- International Journal of Applied Glass Science
- American Ceramic Society Bulletin
- Proceedings and Books
- Phase Equilibria Diagrams Program

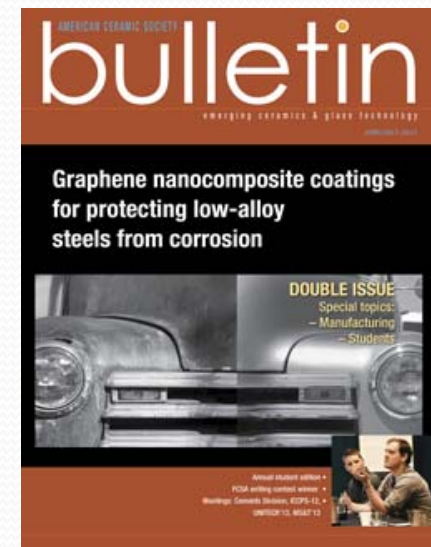
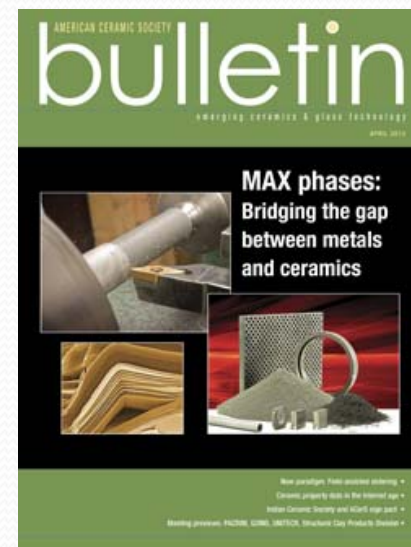


Other Opportunities

- Board of ACerS
- Principal Activities Committees
 - Publications
 - Meetings
 - Membership
 - Education
- Awards Committees
- Division Leadership
- Technical Interest Groups
 - Computational Design of Materials
 - Bioceramics
- PCIA
- Young Professionals Network



- Promote ceramic materials
- Promote the people and companies
- Circulation 8,000 – 10,000
 - 45% industrial
 - 25% academic
 - 10% gov't labs and agencies
 - 20% other or unknown
 - Plus up to 1,000 more at meetings
 - 4,000 Material Advantage students 3x/year



What



- 14,000 subscribers
- Email 2x per week
- 1,000,000 CTT web visits
- Over 1,500,000 CTT page views
- 1.8 stories per visit

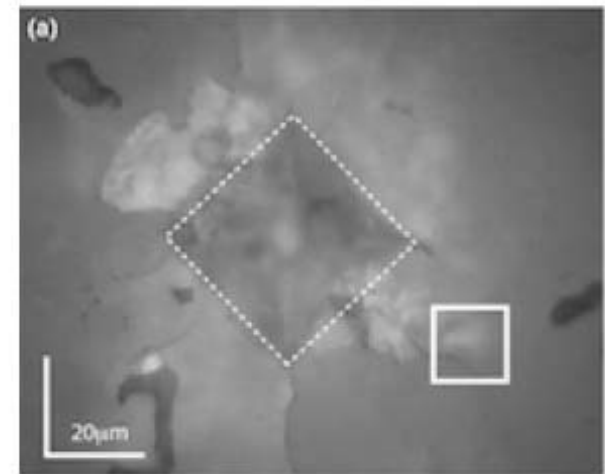
Why

Raman spectroscopy used like a GPS to map toughening in zirconia

Published on August 22nd, 2011 | Edited by: Eileen De Guire

Polarized confocal Raman spectroscopy can be used to observe in situ ferroelastic switching of ceria-stabilized zirconia. Credit: Bolon and Gentleman; JACerS

GPS is a great tool. It can guide you turn-by-turn to your city's shopping mall. It is, in fact, an "*in situ*" device and observes your location in real time. Once there, however, you will need to go inside and look at the mall's directory to find the Apple store (c'mon, we know where you were going). The GPS won't get you the whole way there, but it will get you into the region where you can find what you are looking for.



- Maximize the impact of your work
- Educate broad audience
- Find students, collaborators
- Introduce your students to employers

How



- Paper or patent
- Hi res, copyright-free image
- Press release (if available)
- Be available by email or phone

edeguire@ceramics.org