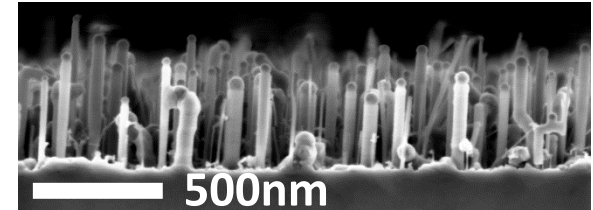


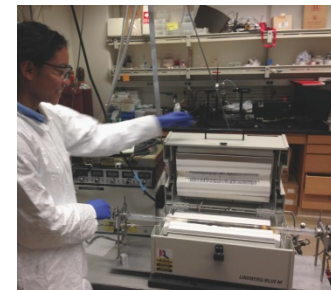
Roya Maboudian

Professor of Chemical and Biomolecular Engineering,
University of California at Berkeley

- **Primary Research Interest:**
Growth and characterization of silicon carbide nanomaterials for harsh environment and energy applications
- **Primary Broader Impact Activity:**
Mentoring, teaching, international collaboration
- **Interests in New Collaborations:**
Atom probe tomography, field emission characterization

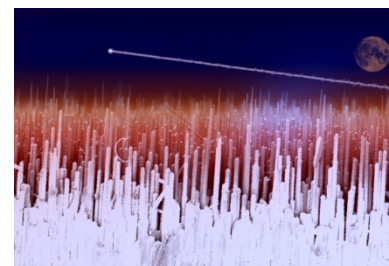
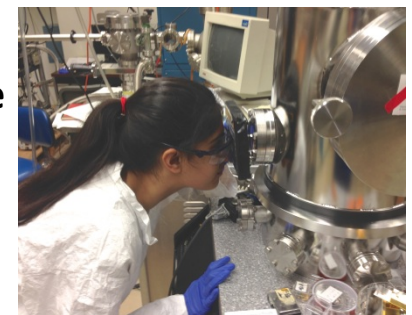


SiCNWs



Graduate Researcher
Lunet Luna

Undergraduate
Researcher
Nisha Mair



SiCNW
Cityscape

Cal Art in Science Exhibit